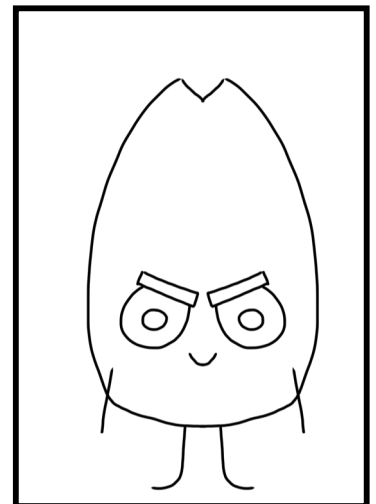
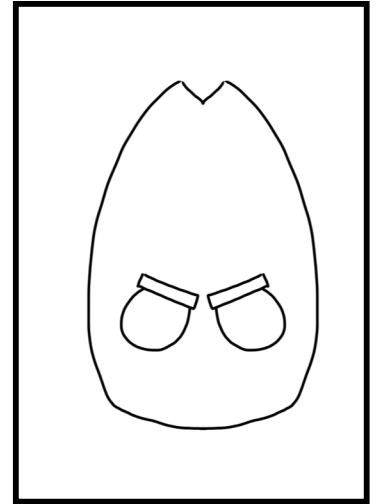
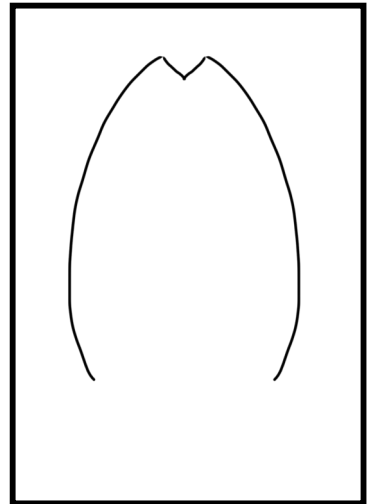
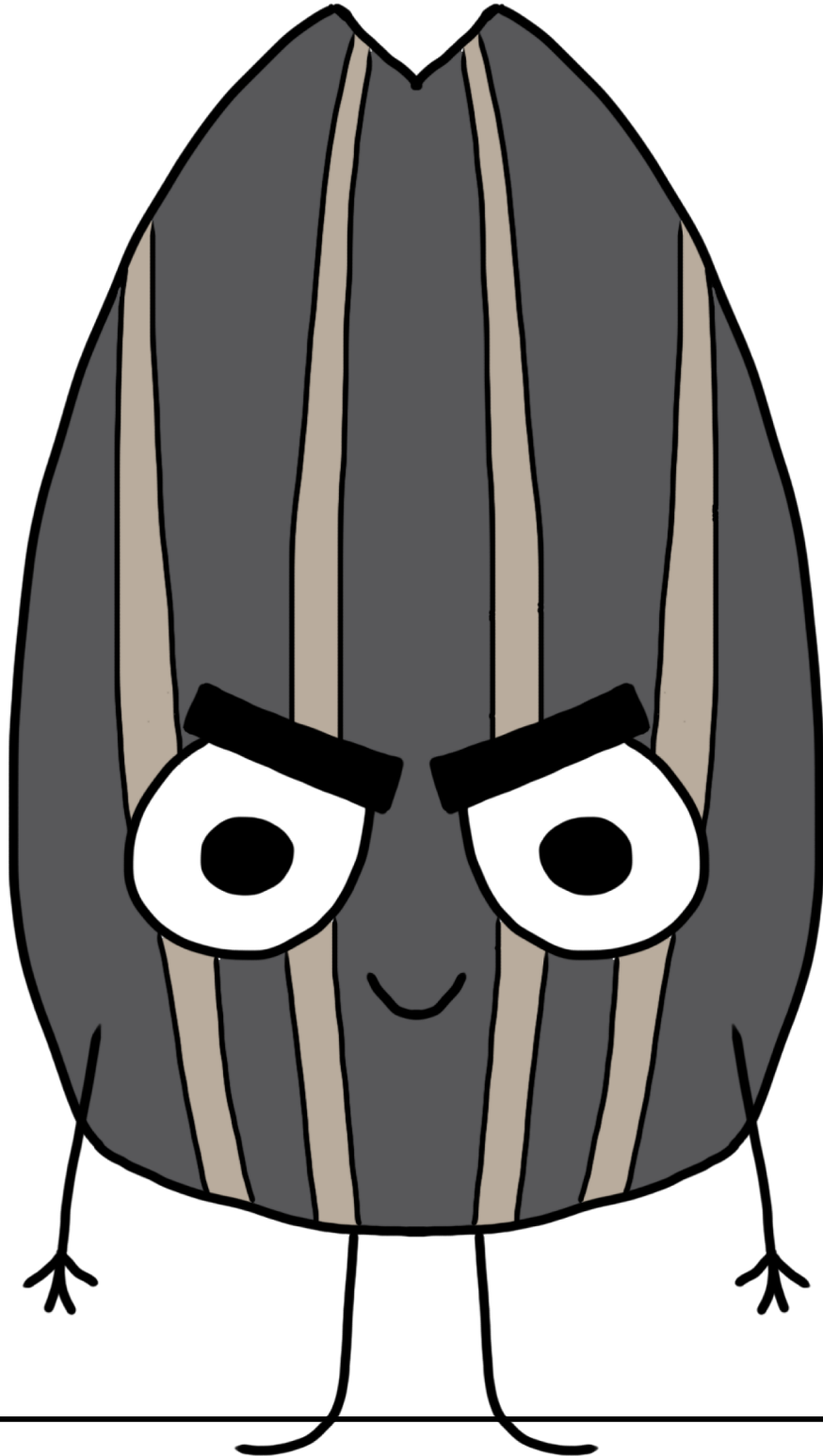


Monster Wrangler Mike Presents

LET'S DRAW

Directed Drawing: The Bad Seed



Frequently Asked Questions

Why Use Directed Drawing in the Classroom?

Directed drawings are great for so many reasons: learning shapes, following directions, practicing hand-eye coordination, developing spatial and size awareness, fine-tuning those fine-motor skills, building vocabulary (I say things like parallel lines and intersect), and building confidence as budding artists/illustrators.

What Grade Level is Best for Directed Drawing?

I've actually done directed drawings with students in kindergarten as well as grades three, four and five. You'll find it tackles all the same skills for older students as with younger students. They start to realize that they CAN draw, and that drawing is just putting together simple, basic shapes.



What does the eraser represent?

The eraser symbol indicates that your students will need to do some erasing in that step.

What Should Students Use to Draw?

With kindergarten students I have them use black crayons to do all basic outline drawing. For older students, or pictures that require erasing, I would suggest using pencils to do outline drawing.

How Do You Show Students What to Draw?

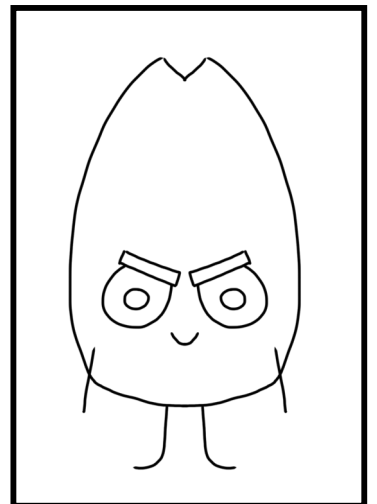
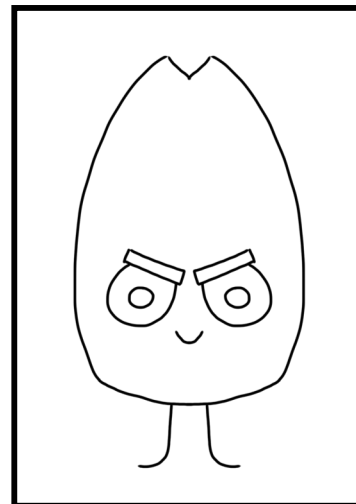
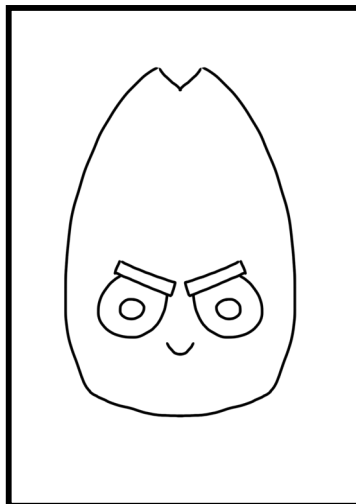
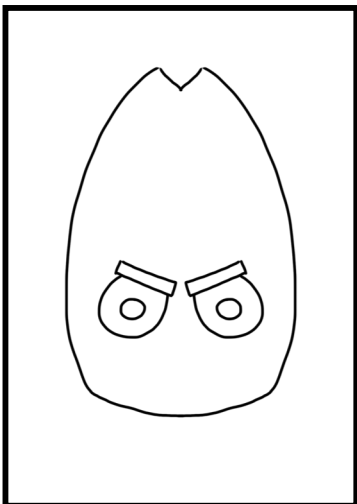
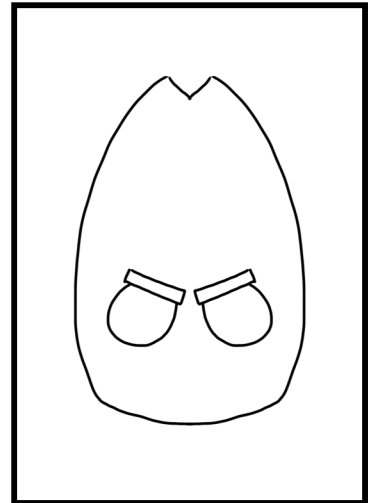
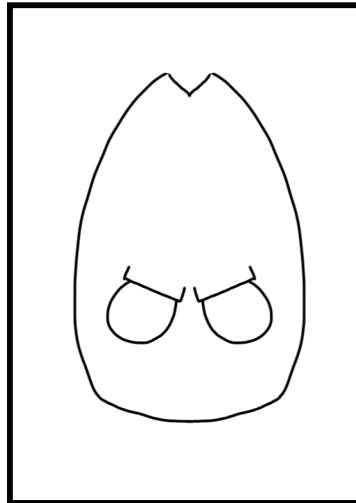
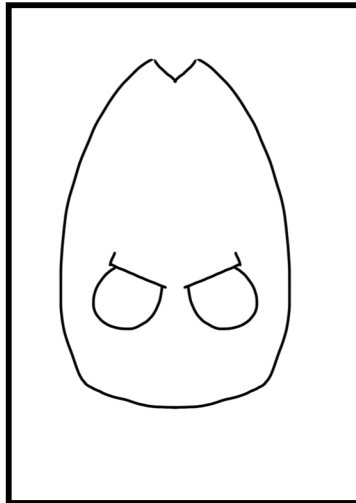
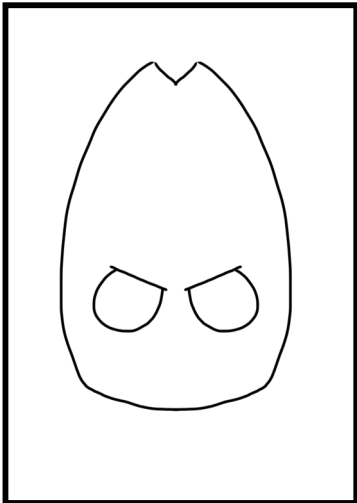
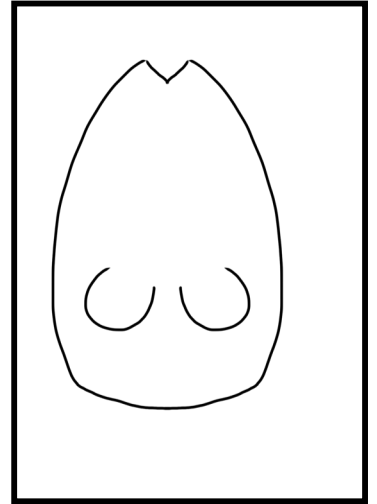
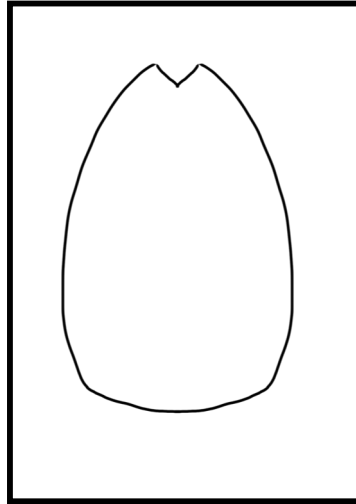
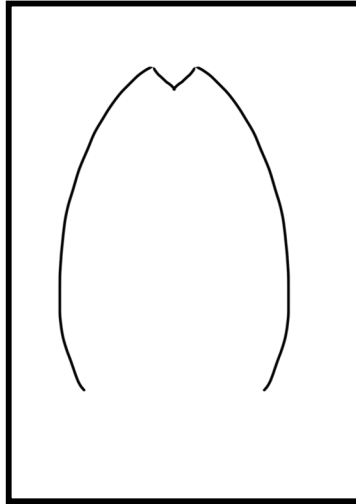
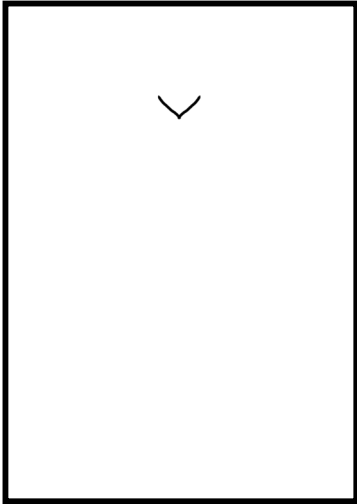
I have used a document camera to project what I am drawing on a screen. I have also used a chart paper and easel to demonstrate the step-by-step drawing.



Quick Tip: I always have a completed drawing done and on display on the same size paper students are using so they can see what the goal is, and help them determine sizing for their drawing.

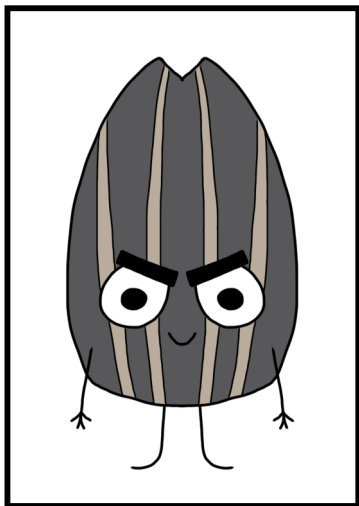
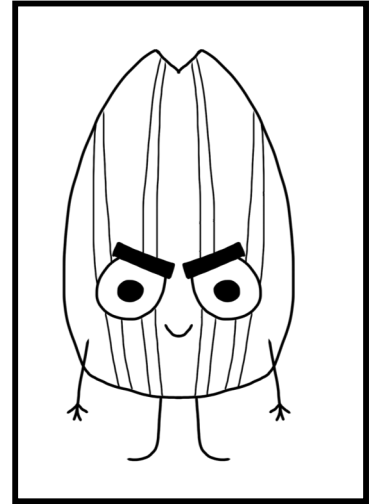
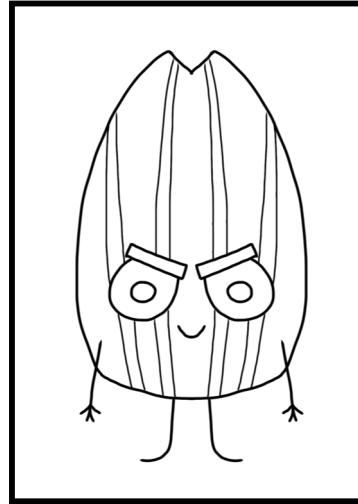
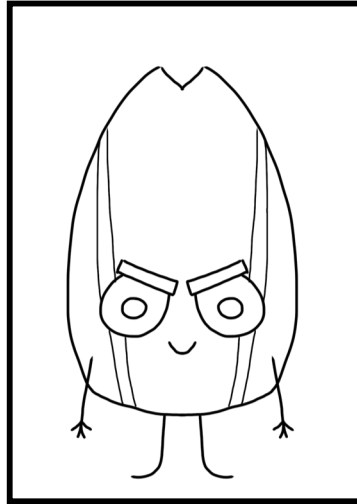
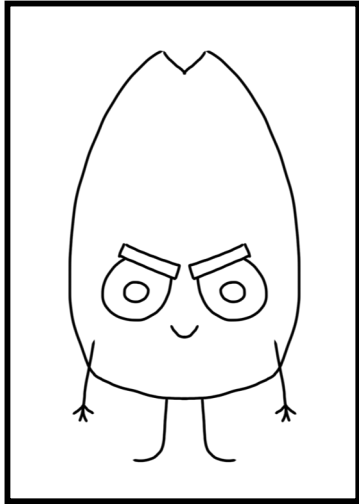
LET'S DRAW

The Bad Seed



LET'S DRAW

The Bad Seed



Follow Me On TPT & Social Media

